

+34 695 577 651

LW
Estates

info@lw-estates.com

Apartment in Manilva

Reference: R4799518



Bedrooms: 3

Bathrooms: 2

M²: 130

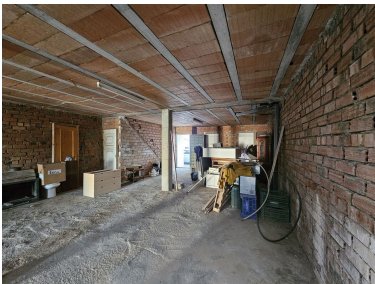
Price: 125,000 €

Status: Sale

Property Type: Apartment

Parking places: by request

Printing day : 31st August
2025





Overview: Investment opportunity! 130M2 residencial house, to be made a home, 130M2, with entrance from the street and views west to the mountain, so you get evening sun. Great possibilities, good space, no community.. Ask for more information. Paperwork for segregation is in process and almost finished. reat moment to fix up this lovely place in the center for Manilva pueblo. With all amenities at hand. We have the key, check the video, we can help with a mortgage, who dares?

Features:

New development, Investment, Resale