

+34 695 577 651

LW
Estates

info@lw-estates.com

Penthouse in Puerto Banús

Reference: R4707196



Bedrooms: 3

Bathrooms: 3

M²: 110

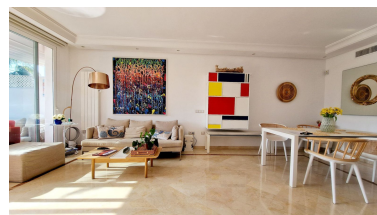
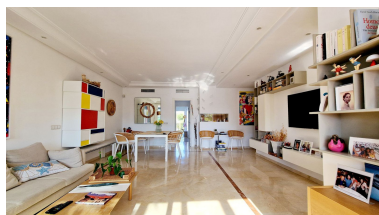
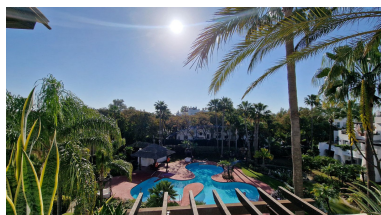
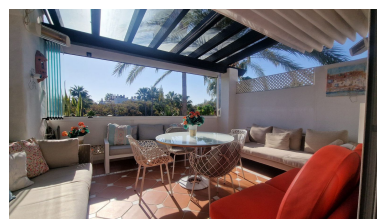
Price: 895,000 €

Status: Sale

Property Type: Penthouse

Parking places: by request

Printing day : 4th September
2025



Overview:BEACHSIDE Marbella | Puerto Banús – Luxurious South-Facing Penthouse Discover this stunning modern penthouse in the exclusive residential area of Azalea Beach, just moments from Puerto Banús. Offering 3 bedrooms, 2 bathrooms, a guest toilet, and a sleek contemporary kitchen, this south-facing home is designed for comfort and style. Originally a 2-bedroom property, it has been cleverly reconfigured to maximize space, now featuring two spacious double bedrooms and a cozy single bedroom. The bathrooms are generously sized, while the guest toilet boasts a modern design. Step onto the sun-drenched terrace, equipped with electric awnings and glass curtains, perfect for year-round enjoyment. Set within a gated, boutique development, residents have access to beautifully landscaped gardens and a serene swimming pool. Enjoy an unbeatable location—just a 3-minute walk to Mistral Beach, the 5-star Guadalpin Banús Hotel, top restaurants, and essential amenities, with Puerto Banús only 15 minutes away on foot. A private parking space and storage room are included in the price. A rare opportunity to own a luxurious penthouse in one of Marbella's most sought-after beachside communities!

Features:

None, Pool, Air conditioning, Heating, Private garden, Lift, None, Parking, Luxury, Resale