

+34 695 577 651

LW
Estates

info@lw-estates.com

Terraced Townhouse in Málaga

Reference: R4693549



Bedrooms: 5

Bathrooms: 2

M²: 817

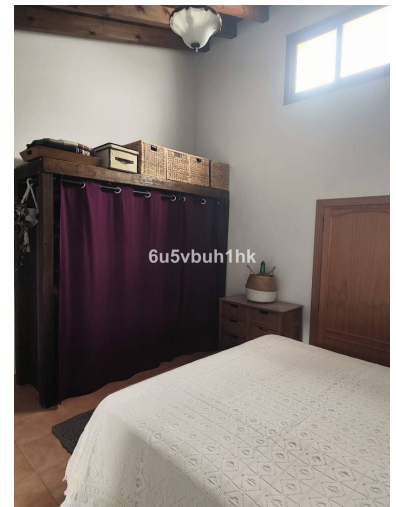
Price: 3,600,000 €

Status: Sale

Property Type: Terraced
Townhouse

Parking places: by request

Printing day : 20th
December 2025



Overview: We are pleased to present this distinguished country property located in a privileged rural setting. This rustic house, part of a larger old manor house, offers a total land area of 480,000 square meters, characterized by its natural beauty and dryland farming soil, primarily dedicated to almond trees, olive trees, and carob trees. The extensive land not only provides a tranquil and private environment but also presents an exceptional opportunity to expand and diversify agricultural production. With the possibility of increasing the number of trees in production, this estate offers significant potential for those interested in actively exploiting the land and increasing its agricultural yield. The residence encompasses over 800 square meters of construction, of which more than 200 square meters are dedicated to habitable spaces, where a family currently resides. Additionally, an additional part of the property is designated for multiple uses, such as a corral and storage. However, there is the possibility of adapting these areas to create additional rooms or even a separate entrance for another family, thus expanding the options for use and enjoyment of the property. It is important to note that this rustic house shares a wall with the neighbor, forming part of a larger structure. One of the highlights of this property is its natural environment, which offers breathtaking panoramic views that change with the seasons. From every corner of the property, one can enjoy the beauty and serenity of the surrounding landscape, providing a living experience in harmony with nature. In summary, this rustic house nestled on extensive agricultural land offers a unique opportunity for those seeking a tranquil lifestyle connected with the land. With its ample space, versatility of use, and unparalleled views, this property represents a valuable investment and a true gem in the rural real estate market.

Features:

