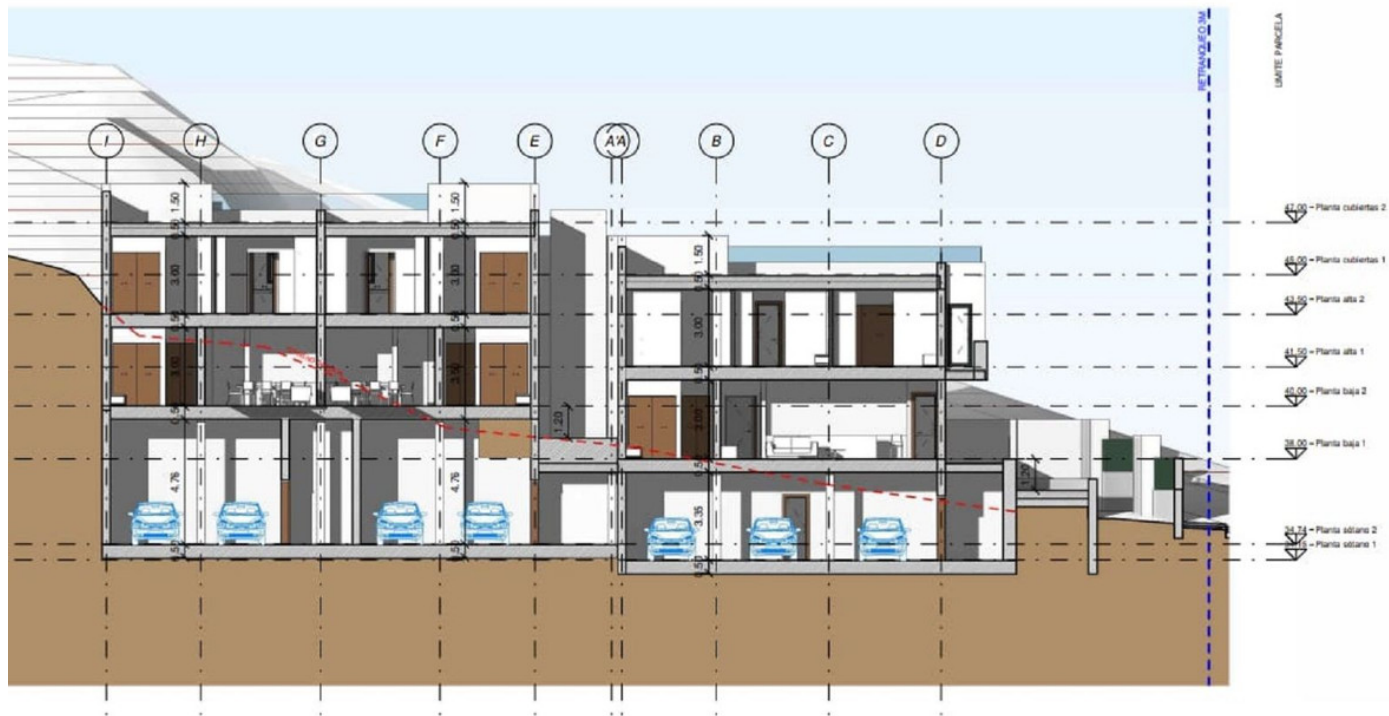


Land in Marbella

Reference: R4687204



Bedrooms: by request

Bathrooms: by request

M²: 1,200

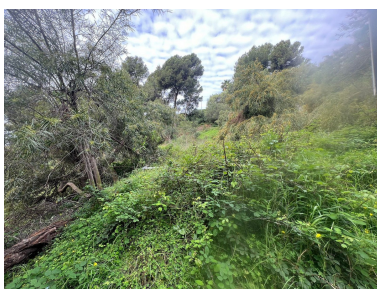
Price: 1,000,000 €

Status: Sale

Property Type: Land

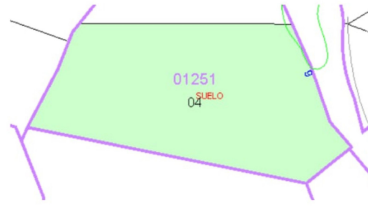
Parking places: by request

Printing day : 18th October
2024





Parcela en Marbella centro - Residencial
Parcela 1600 m²
Edificabilidad 40%
Ocupación 35%
Residencial



Overview: Residential plot with project for 1 large villa and 2 town houses, this can be changed to to make one very large villa potential of some sea views from the top levels, location is less than 5 mins walk to the beach Residential Plot, Marbella, Costa del Sol. Garden/Plot 1609 m². Setting : Town, Close To Shops, Close To Sea. Orientation : South. Views : Sea. Category : Investment, With Planning Permission.

Features:

None, Sea views, Investment