

+34 695 577 651

info@lw-estates.com

Commercial in Coín

Reference: R4631353



Bedrooms: by request

Bathrooms: 1

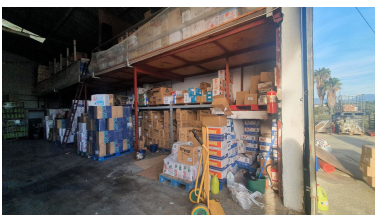
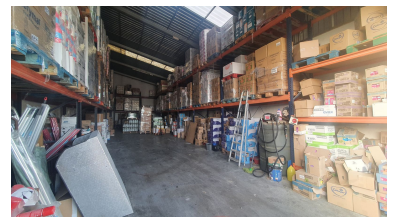
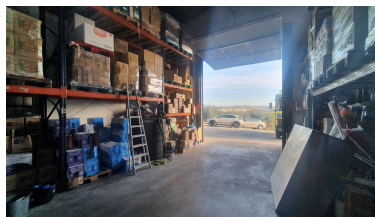
M<sup>2</sup>: 567

Price: 295,000 €

Status: Sale

Property Type: Commercial Parking places: by request

Printing day : 22nd October  
2024



Overview: Rustic Plot with Industrial Warehouses in a 3,000m<sup>2</sup> plot with AFO Certification thus providing legal compliance. The entire property is securely fenced. Key Features: Two Industrial Warehouses: The property comprises two single-storey industrial warehouses with a 495m<sup>2</sup> total constructed area. Warehouse 1 Amenities: Includes a bathroom and an office space of approximately 11m<sup>2</sup> on a mezzanine level, accessed via stairs. Additional Storage Spaces: There are two warehouses and two covered sheds, totalling 145m<sup>2</sup> (computed at 50% covered area). Water Storage: The property boasts three cisterns with capacities of 60,000 litres, 20,000 litres, and 10,000 litres, in addition to well water and town water sources. Easy Access: The property is easily accessible, facilitating varied use of the installations.

---

Features:

Parking, Investment, Resale