

+34 695 577 651

**LW**  
Estates

info@lw-estates.com

Villa in Manilva

Reference: R4599586



Bedrooms: 4

Bathrooms: by request

M<sup>2</sup>: 364

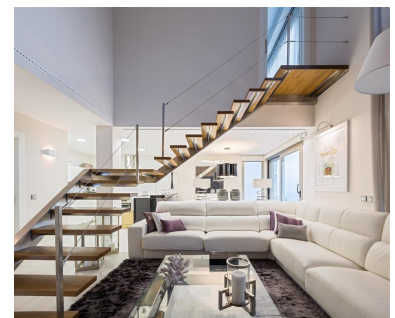
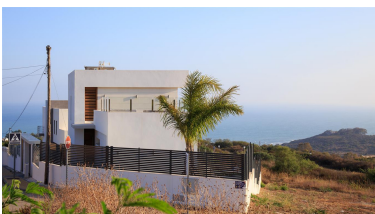
Price: 750,000 €

Status: Sale

Property Type: Villa

Parking places: by request

Printing day : 20th January  
2025





---

Overview: Modern style and very attractive villa in excellent position, and built using high quality materials, south facing, very private and with stunning panoramic sea views of the coast towards Gibraltar and the Africa coast. Located in a very quiet urbanization surround of massive nature. Midway between Sotogrande and the famous Puerto de la Duquesa, only 700m. from really beautiful beaches, all amenities are close in a short 5-10min. drive. Many extras: Air conditioning and central heating, parking space, swimming pool with jacuzzi and countercurrent swimmer, solarium with other jacuzzi, domotic, and much more. Must be seen!!.

---

#### Features:

Pool, Air conditioning, Sea views, Mountain views, Private garden, None, Alarm system, Parking, Holiday Home