

+34 695 577 651

LW
Estates

info@lw-estates.com

Villa in Manilva

Reference: R4581202



Bedrooms: 3

Bathrooms: 4

M²: 338

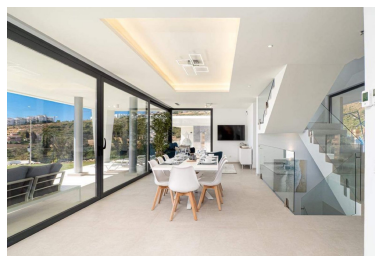
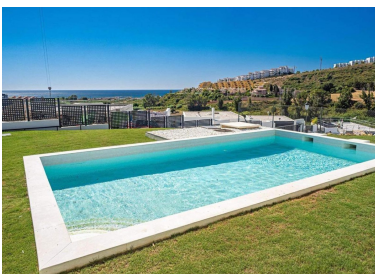
Price: 1,090,000 €

Status: Sale

Property Type: Villa

Parking places: by request

Printing day : 20th January
2025





Overview: Brand New Contemporary Detached Villa with Panoramic Sea Views. Located in the area of Puerto de la Duquesa, only 3Kms from the port and 4 kms from Sabinillas, where you can find all kind of shops and leisure facilities. Just a short walk to magnificent beaches (5min). South facing, Very Bright Property. With private garden and large swimming pool. Direct access to the terrace from where you can enjoy sea views. Great opportunity!

Features:

Pool, Air conditioning, Heating, Sea views, Mountain views, None, Private garden, Alarm system, Parking, Investment, Luxury, Resale