

+34 695 577 651

LW
Estates

info@lw-estates.com

Land in Benahavís

Reference: R4405132



Bedrooms: by request

Bathrooms: by request

M²: 449

Price: 810,000 €

Status: Sale

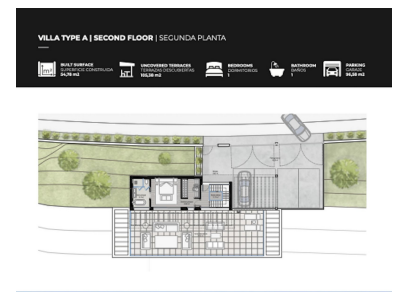
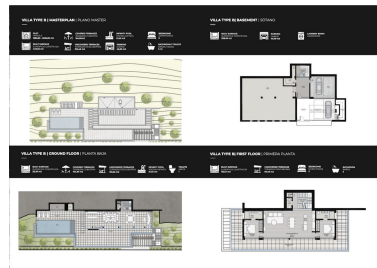
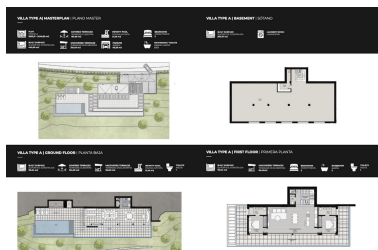
Property Type: Land

Parking places: by request

Printing day : 24th

December 2025





Overview: **INVESTORS PAY ATTENTION!** A wonderful opportunity....here is a plot of land with great potential. The original design offers a total build size of 440m², of which covered terraces are 164m², uncovered terraces 310m², a pool of 51m², a garage of 45m² and interior built surface. of 258m² An in depth assessment of the project and build have been carried out and there is a lot of information to be shared with an interested party. Please note: the plans included here are simply an idea. There is no project on this plot. El Real de la Quinta goes from strength to strength and a plot like this one is a diamond with a huge potential. Up to 4 levels can be built on this plot, and a building license can be secured from the Benahavís municipality in as little as 3 months, streamlining the development process. For any interested person or developer, get in touch to find out more about the possibility of building alongside 2 other owners on this location, who have already made significant in-roads into the preparations. Super west facing plot within the area of El Real de la Quinta. This plot is flat and is ready for an architect to come and design a dream home. Overlooking what will be the golf course of this luxurious new area in Benahavis, the villa that is built here will have stunning views and will be able to access incredible facilities. The resort includes premium amenities, such as a central lake, clubhouse with outdoor swimming pool, gym, spa, tennis courts, and a golf course with its own academy. Additionally, the nearby 5-star hotel, operated by the esteemed Banyan Tree Group, enhances the area's prestige. Real de La Quinta Residential Country Club Resort® is an enchanting 200 hectare residential resort, seamlessly integrated into the idyllic foothills of the Sierra de las Nieves overlooking the majestic La Concha mountain, the picturesque Costa del Sol and bordering the UNESCO biosphere reserve. Fulfil your lifestyle dreams with the Real de La Quinta real estate project where nature coexists with the modern world. **GREAT OPPORTUNITY TO OBTAIN A BUILDING PLOT IN THE MOST UP AND COMING LOCATION BUILDING PLOT IN REAL DE LA QUINTA WITH GORGEOUS VIEWS AND WEST ORIENTATION.**

Features:

Sea views, Mountain views