

+34 695 577 651

**LW**  
Estates

info@lw-estates.com

Apartment in Diana Park

Reference: R4339807



Bedrooms: 2

Bathrooms: 2

M<sup>2</sup>: 89

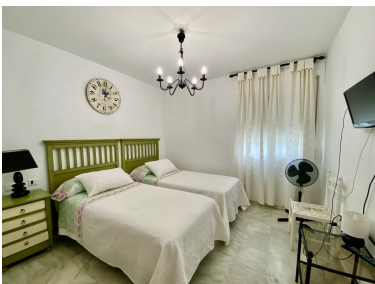
Price: 275,000 €

Status: Sale

Property Type: Apartment

Parking places: by request

Printing day : 29th  
December 2025





---

Overview: Ground Floor Apartment, Diana Park, Costa del Sol. 2 Bedrooms, 2 Bathrooms, Built 0 m<sup>2</sup>. Setting : Commercial Area, Close To Golf, Close To Port, Close To Shops, Close To Sea, Close To Town, Close To Schools, Close To Marina, Urbanisation. Orientation : West. Condition : Excellent, Recently Renovated. Pool : Communal. Views : Garden. Features : Lift, Fitted Wardrobes, Near Transport, Utility Room, Ensuite Bathroom, Double Glazing. Furniture : Fully Furnished. Kitchen : Fully Fitted. Garden : Communal. Security : Gated Complex, Entry Phone. Parking : More Than One, Communal. Utilities : Electricity, Drinkable Water, Gas. Category : Golf, Holiday Homes, Investment, Resale, Contemporary.

---

Features:

None, None, Pool, Private garden, Lift, Parking, Holiday Home, Investment, Resale