

+34 695 577 651

LW
Estates

info@lw-estates.com

Villa in Manilva

Reference: R4319881



Bedrooms: 6

Bathrooms: 6

M²: 450

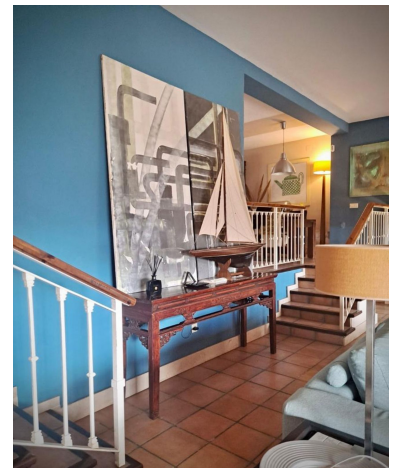
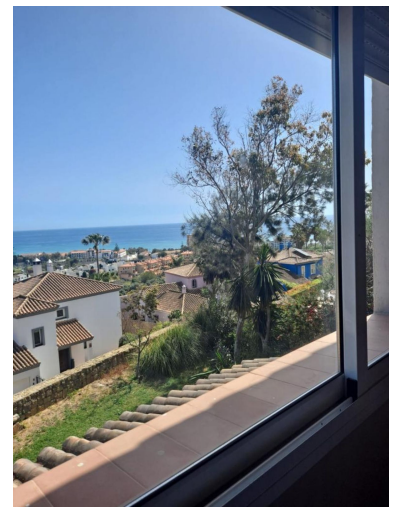
Price: 865,000 €

Status: Sale

Property Type: Villa

Parking places: by request

Printing day : 19th June
2026



Overview: Detached Villa, Manilva, Costa del Sol. 6 Bedrooms, 6 Bathrooms, Built 450 m², Garden/Plot 750 m².
Setting : Country, Commercial Area, Close To Shops, Close To Schools, Urbanisation. Orientation : South East.
Condition : Excellent. Pool : Private, Indoor. Climate Control : Air Conditioning, Fireplace. Views : Sea, Mountain,
Golf, Country, Panoramic, Garden. Features : Covered Terrace, Fitted Wardrobes, Near Transport, Private Terrace,
Solarium, Satellite TV, WiFi, Sauna, Games Room, Storage Room, Utility Room, Ensuite Bathroom, Jacuzzi,
Barbeque, Double Glazing, Basement. Furniture : Fully Furnished. Kitchen : Fully Fitted. Garden : Private. Security :
Electric Blinds, Entry Phone, Alarm System. Parking : Garage, Private. Utilities : Electricity, Drinkable Water,
Telephone. Category : Golf, Investment, Reduced.

Features:

None, Pool, Air conditioning, Sea views, Mountain views, Private garden, None, Alarm system, Parking, Investment