

+34 695 577 651



info@lw-estates.com

Apartment in Puerto Banús

Reference: R4298782



Bedrooms: 2

Bathrooms: 2

M²: 137

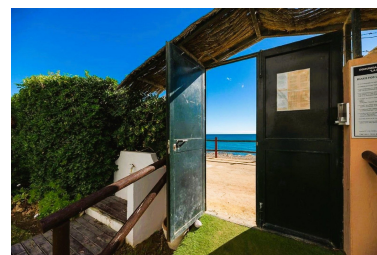
Price: 1,140,000 €

Status: Sale

Property Type: Apartment

Parking places: by request

Printing day : 27th
December 2024





Overview: Apartment on the seafront, located in La Herradura de Banus, with direct access to the beach and spectacular views of the Mediterranean Sea, in the heart of Puerto Banus. The house is distributed in a large living room that has access to a covered terrace of about 35m², closed with glass curtains and facing East. Separate kitchen with utility room, large hall, two bedrooms with fitted wardrobes. Both with bathroom en suite. The main one with space for a dressing room. Includes storage room of 16 m. And underground parking space. By location it is in an exceptional place to live or for profitability with great potential. Located in the most prominent and well-known areas of Marbella, surrounded by all kinds of shops and high-end services. Do not hesitate to call us and arrange a visit or more information.

Features:

Beachfront, Pool, Air conditioning, Heating, Sea views, Private garden, Lift, None, 24H Security, Parking, Holiday Home, Luxury, Resale