

+34 695 577 651

LW
Estates

info@lw-estates.com

Villa in Sotogrande

Reference: R4217806



Bedrooms: 7

Bathrooms: 9

M²: 921

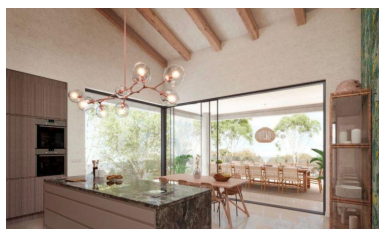
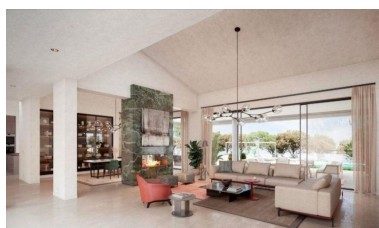
Price: 5,400,000 €

Status: Sale

Property Type: Villa

Parking places: by request

Printing day : 1st September
2025



Overview: Off-plan house on Calle Formentera, next to the Almenara golf course, in Sotogrande. This house will be a sustainable house with energy rating A. The plot has an area of 3,003 m² oriented to the South-East (facing the Mediterranean Sea), and in a cul-de-sac, which gives it more privacy. The projected house has a total built area of 921m² of housing, 132m² of porches and 92m² of a large pool. This house will have a great luminosity derived from natural light throughout the day. Large windows will open and integrate the interior spaces to the exterior, with floors that will extend to the terraces where you can enjoy the wonderful Mediterranean climate. On the ground floor, a large living room has been designed, separated from the dining room by a column-fireplace for colder days. The kitchen will be very functional and will be open to the terrace and pool through a porch where you can set up a large dining table to take advantage of the good weather most of the year. Two rooms have been designed on the ground floor and another three on the upper floor, each with its full bathroom and dressing room. The main room will have a large terrace overlooking the sea and the golf course. On the -1 floor there will be an apartment for the service. The garage will have capacity for 3 cars and next to it there is a room with a bathroom for the driver. The house will also have a sauna, gym and several multipurpose rooms. The materials to be used are of excellent quality as well as the finishing levels. The house will have a security system with volumetric and video surveillance detectors, home automation control and pre-installation for connection of solar panels on the roof. Villa, Sotogrande, Costa del Sol. 7 Bedrooms, 9 Bathrooms, Built 921 m², Terrace 230 m², Garden/Plot 3000 m². Setting : Close To Golf, Close To Schools, Urbanisation. Orientation : South. Condition : Excellent, New Construction. Pool : Private. Climate Control : Air Conditioning, Hot A/C, Cold A/C, Central Heating, U/F Heating, U/F/H Bathrooms. Views : Sea. Features : Covered Terrace, Fitted Wardrobes, Private Terrace, Gym, Games Room, Storage Room, Utility Room, Ensuite Bathroom, Marble Flooring, Jacuzzi, Double Glazing, Staff Accommodation, Basement, Fiber Optic. Kitchen : Fully Fitted. Garden : Private. Security : 24 Hour Security. Parking : Underground, Garage, Covered, More Than One, Private. Category : Luxury, Resale.

Features:

New development, Pool, Air conditioning, Heating, Sea views, None, Private garden, 24H Security, Parking, Luxury, Resale