

+34 695 577 651

**LW**  
Estates

info@lw-estates.com

Commercial in Puerto Banús

Reference: R4105132



Bedrooms: by request

Bathrooms: 5

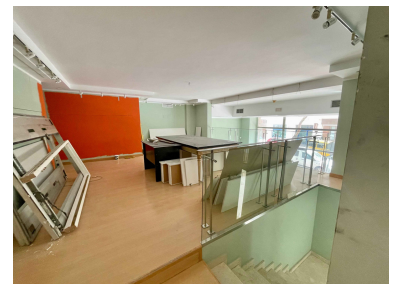
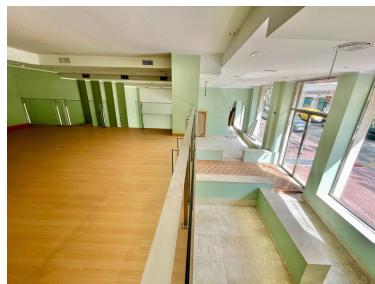
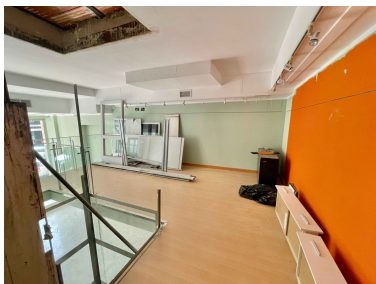
M²: 436

Price: 1,990,000 €

Status: Sale

Property Type: Commercial Parking places: by request

Printing day : 15th  
September 2025





---

**Overview:**Freehold Commercial Premises – Prime Puerto Banús Location An outstanding investment opportunity: five ground-floor commercial shops in the vibrant heart of Puerto Banús. This sought-after area ensures excellent visibility and foot traffic, making it ideal for a variety of businesses. **Property Highlights:** Freehold ownership Total built area: 436 m<sup>2</sup> Five individual shops: 65 m<sup>2</sup> 40 m<sup>2</sup> 52 m<sup>2</sup> 45 m<sup>2</sup> 82 m<sup>2</sup> Prime ground-floor location in a high-demand commercial zone Perfect for investors or entrepreneurs looking to establish a presence in one of Marbella's most prestigious areas. Contact us for more details or to arrange a viewing.

---

#### Features:

Air conditioning