

+34 695 577 651

LW
Estates

info@lw-estates.com

Commercial in Coín

Reference: R4028527



Bedrooms: by request

Bathrooms: by request

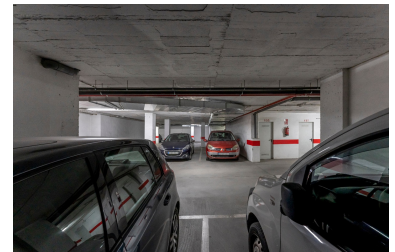
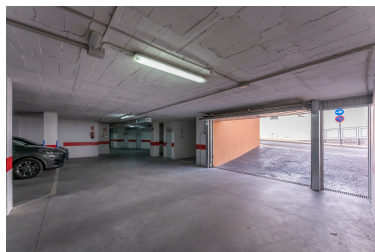
M²: 18

Price: 20,000 €

Status: Sale

Property Type: Commercial Parking places: by request

Printing day : 2nd January
2026





Overview: PARKING SPACE LOCATED ON STREET COUNCILOR SEBASTIAN GUZMAN CARABANTES IT HAS EASY ACCESS WITH A VERY LARGE AUTOMATIC DOOR, IT ALSO HAS A DIRECT PEDESTRIAN ACCESS DOOR FROM THE STREET. GOOD VISIBILITY, SPACIOUS CLEAN, WITH SURVEILLANCE AND ALARM.

Features:

24H Security, Parking